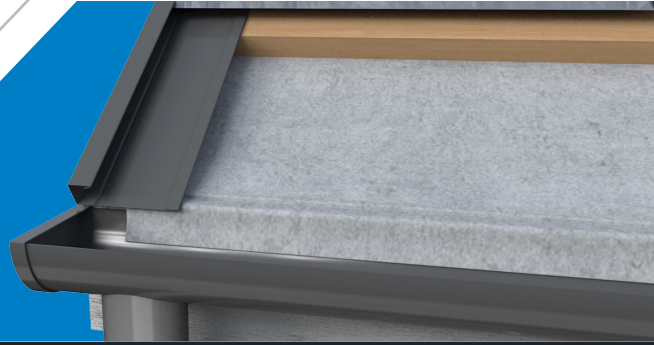


NWA

ALUVERGE®



C01G SLATE DRY VERGE

TECHNICAL DATA SHEET

The Kytun Slate Dry Verge System permanently secures slate applications on gable ends protecting the verge from wind uplift and rain.

The design helps protect the edge of the roof from the elements and eliminates the possibility of lifting and damage to the roof underlay. No mortar or timber guides are required. It can be bespoke manufactured to virtually any profile to suit individual requirements.



bre



C01G/NG/GT/NGT SLATE DRY VERGE

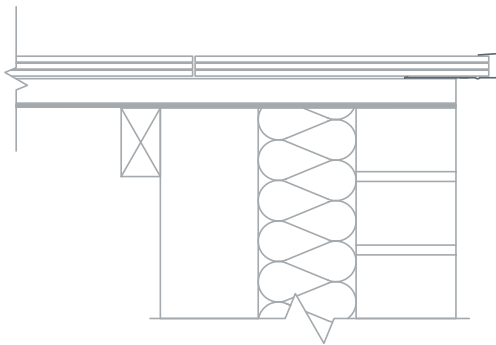
TECHNICAL DATA SHEET

Product Details

The Kytun Slate Dry Verge System permanently secures slate applications on gable ends protecting the verge from wind uplift and rain.

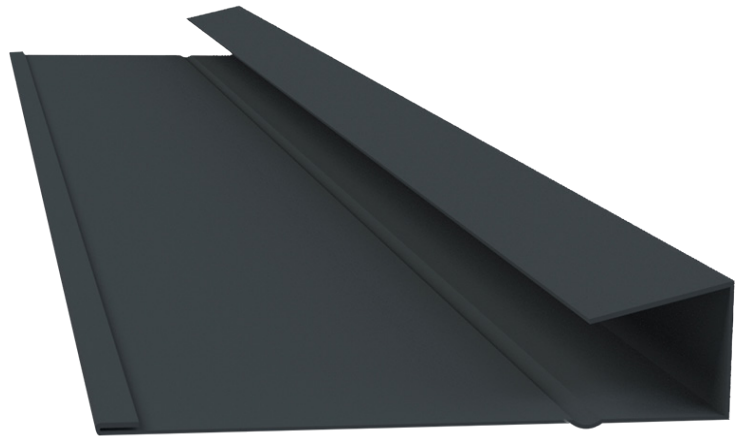
The Slate Dry verge System can be used with both interlocking slates and double lap natural or fibre cement slates.

The components are manufactured from high grade pre-primed polyester coated galvanised steel.



Product Features

- Provides full wind uplift and rain protection.
- Patented 'Drip System' which allows for self drainage of rain water into the gutter.
- Extremely easy and quick to install.
- Requires no maintenance once installed.
- Can be fully customised.
- Extensive range of colours available.



Dimensions

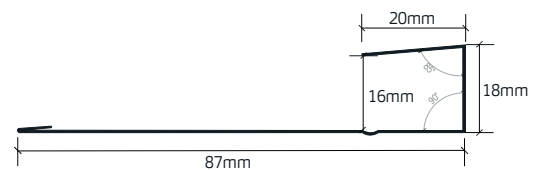
Galvanised Steel

Overall length: 2400mm/3000mm

Code	Size	Colour	Pk Qty
C01G	18mm x 2.4m/3m	Blk • Blue/Blk	10
C01NG	25mm x 2.4m/3m	Blk • Blue/Blk	10
C01GT	18mm x 2.4m/3m	Blk • Blue/Blk	10
C01NGT	25mm x 2.4m/3m	Blk • Blue/Blk	10

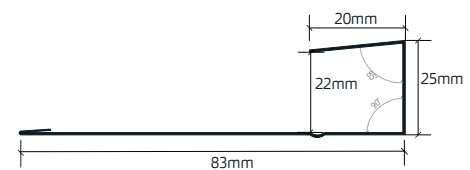
Galv. Steel
Polyester Coated

Galv. Steel Textured
Plastisol Coated



4-5mm

Fibre Cement Slate



6-8mm

Natural Slate