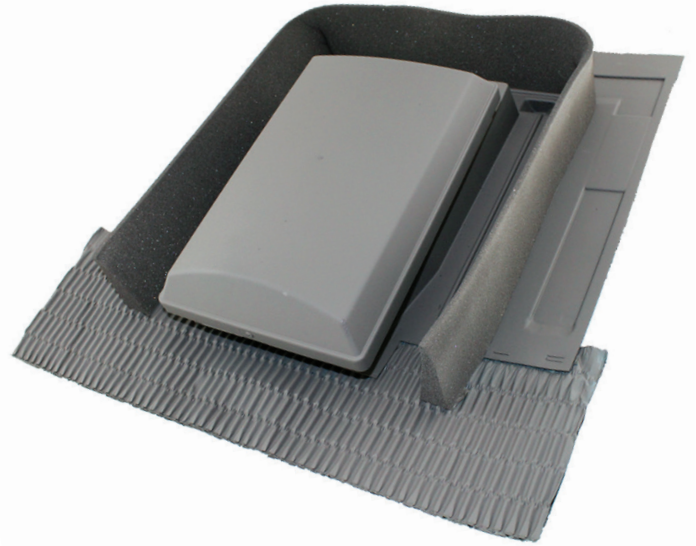


## Product Details

The low profile cowl on the Glidevale Versa-Tile G3 mirrors the popular G5 on a smaller scale, enabling use at high level in conjunction with G5 Ventilators at low level.

Guaranteed actual nett free ventilation area:  
 10,000mm<sup>2</sup>



## Product Features

- Universal design suits virtually all single lap interlocking roof tiles.
- Fade-retardant UV-stable surface treatment proven in use over 25 years.
- Easy to install (instructions with pack).
- Compressible foam filler ensures driving and deluge rain resistance as shown by test.
- Underlay Protector maintains function of underlay when cut.
- Optional snap-fit Universal Extension Sleeve available to maintain air path into roof void.
- Low airflow resistance - can be used as a terminal for soil vent pipe (SVP) or most extract fans, with 110mm diameter Soil Universal Pipe Adaptor.
- Integral 4mm insect screen.
- Designed and developed under BS EN ISO 9001.

## Technical

Performance:	Guaranteed actual nett free ventilation area: 10,000mm <sup>2</sup>
Spacing to achieve:	10,000mm <sup>2</sup> /m; 1.0m
Airflow resistance:	2.5Pa at 54m <sup>3</sup> /h (15 litres/sec)
	11Pa at 108m <sup>3</sup> /h (30 litres/sec)
	42.5Pa at 216m <sup>3</sup> /h (60 litres/sec)