

# C09 TILE DRY VERGE

## TECHNICAL DATA SHEET

The Kytun Tile Dry Verge System permanently secures tiles on gable ends and gives an attractive maintenance free finish to the roofline.

The design helps protect the edge of the roof from the elements and eliminates the possibility of lifting and damage to the roof underlay. No mortar or timber guides are required. It can be bespoke manufactured to virtually any profile to suit individual requirements.

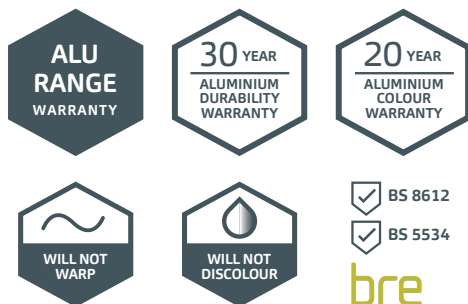
All our bespoke dry verge is manufactured from 0.7mm high grade Aluminium.

### Compatibility

**45mm Version:** Suitable for a maximum individual tile thickness of 20mm

**55mm Version:** Suitable for a maximum individual tile thickness of 25mm

**65mm Version:** Suitable for a maximum individual tile thickness of 30mm

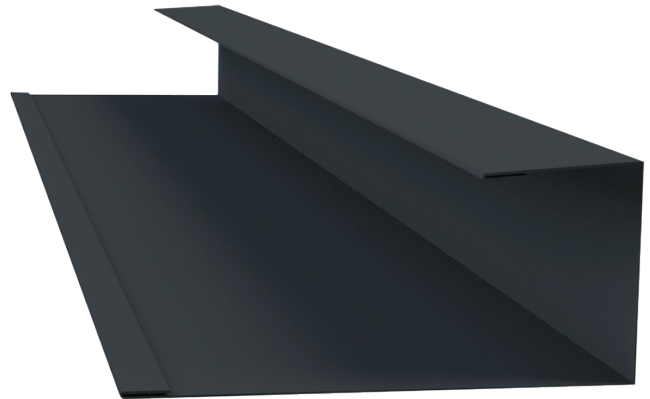


# C09 TILE DRY VERGE

## TECHNICAL DATA SHEET

### Product Details

The Kytun Tile Dry Verge System permanently secures tiles on gable ends and gives an attractive maintenance free finish to the roofline. The design helps protect the edge of roof tiles from the elements and eliminates the possibility of lifting and damage to the roof underlay. No mortar or timber guides are required. It can be bespoke manufactured to virtually any profile to suit individual requirements.



Tile Dry Verge (T1)

### Product Features

- Provides full wind uplift and rain protection.
- Extremely easy and quick to install.
- Requires no maintenance once installed.
- Can be fully customised.
- Available in a range of colours:  
Black, Blue/Black, Brown & White.
- Powder coated colours also available on request.



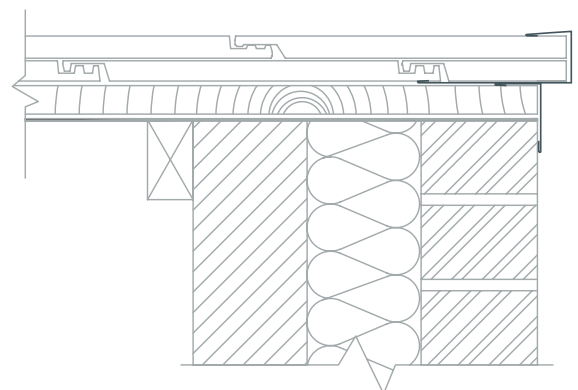
Angle Piece  
(Batten Protector)

### Compatibility

Fully compatible with most tiles on the market. Suitable for brick, render and bargeboard construction.

#### BESPOKE VERSIONS AVAILABLE

The C09 range can be bespoke manufactured to accommodate all sizes and virtually any profile to suit individual requirements.



# C09 TILE DRY VERGE

## TECHNICAL DATA SHEET

### Dimensions

#### Aluminium

##### Tile Dry Verge (T1) - Aluminium

Code	Size	Colour
C09S	Tile Dry Verge Alu. (T1) 45mm x 2.4m / 3m	Blk • Blue/Blk • Brown
C09	Tile Dry Verge Alu. (T1) 55mm x 2.4m / 3m	Blk • Blue/Blk • Brown
C09L	Tile Dry Verge Alu. (T1) 65mm x 2.4m / 3m	Blk • Blue/Blk • Brown
C09F	Tile Dry Verge Alu. Angle Piece 40 x 60mm x 2.4m / 3m	Blk • Blue/Blk • Brown
C09JS	Tile Dry Verge Alu. (T1) 45mm Jointer x 70mm	Blk • Blue/Blk • Brown
C09J	Tile Dry Verge Alu. (T1) 55mm Jointer x 70mm	Blk • Blue/Blk • Brown
C09JL	Tile Dry Verge Alu. (T1) 65mm Jointer x 70mm	Blk • Blue/Blk • Brown
C09C45	Tile Dry Verge Alu. (T1) 45mm Bell-Cast Jointer x 500mm	Blk • Blue/Blk • Brown
C09C55	Tile Dry Verge Alu. (T1) 55mm Bell-Cast Jointer x 500mm	Blk • Blue/Blk • Brown
C09C65	Tile Dry Verge Alu. (T1) 65mm Bell-Cast Jointer x 500mm	Blk • Blue/Blk • Brown

ALU  
RANGE  
WARRANTY

30 YEAR  
ALUMINIUM  
DURABILITY  
WARRANTY

20  
ALUMINIUM  
COLOUR  
WARRANTY

#### Galvanised Steel

##### Tile Dry Verge (T1) - Steel

Code	Size	Colour
C09GTS	Tile Dry Verge Steel Txt. (T1) 45mm x 2.4m / 3m	Blk • Blue/Blk • Brown
C09GT	Tile Dry Verge Steel Txt. (T1) 55mm x 2.4m / 3m	Blk • Blue/Blk • Brown
C09GTL	Tile Dry Verge Steel Txt. (T1) 65mm x 2.4m / 3m	Blk • Blue/Blk • Brown
C09GTF	Tile Dry Verge Steel Txt. Angle Piece 40 x 60mm x 2.4m / 3m	Blk • Blue/Blk • Brown
C09GTJS	Tile Dry Verge Steel Txt. (T1) 45mm Jointer x 70mm	Blk • Blue/Blk • Brown
C09GTJ	Tile Dry Verge Steel Txt. (T1) 55mm Jointer x 70mm	Blk • Blue/Blk • Brown
C09GTJL	Tile Dry Verge Steel Txt. (T1) 65mm Jointer x 70mm	Blk • Blue/Blk • Brown
C09GTC45	Tile Dry Verge Steel Txt. (T1) 45mm Bell-Cast Jointer x 500mm	Blk • Blue/Blk • Brown
C09GTC55	Tile Dry Verge Steel Txt. (T1) 55mm Bell-Cast Jointer x 500mm	Blk • Blue/Blk • Brown
C09GTC65	Tile Dry Verge Steel Txt. (T1) 65mm Bell-Cast Jointer x 500mm	Blk • Blue/Blk • Brown

STEEL  
RANGE  
WARRANTY

20 YEAR  
STEEL  
DURABILITY  
WARRANTY

20 YEAR  
STEEL  
COLOUR  
WARRANTY

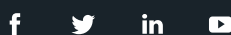
bre



✓ BS 8612

✓ BS 5534

**NWA**  
GROUP



Ir. Office: Keenaghan, Kilmacrenan, Letterkenny,  
Co. Donegal, Ireland. F92 DW64

T. +353 (0)74 91 39500 F. +353 (0)74 91 39519

E. [info@nwa.ie](mailto:info@nwa.ie) W. [www.nwa.ie](http://www.nwa.ie)